




CENTRAL BUSINESS DISTRICT

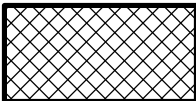


Historic Resources

Potential Designated Historic Properties (PDHP's)

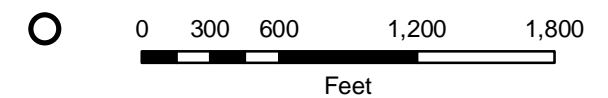
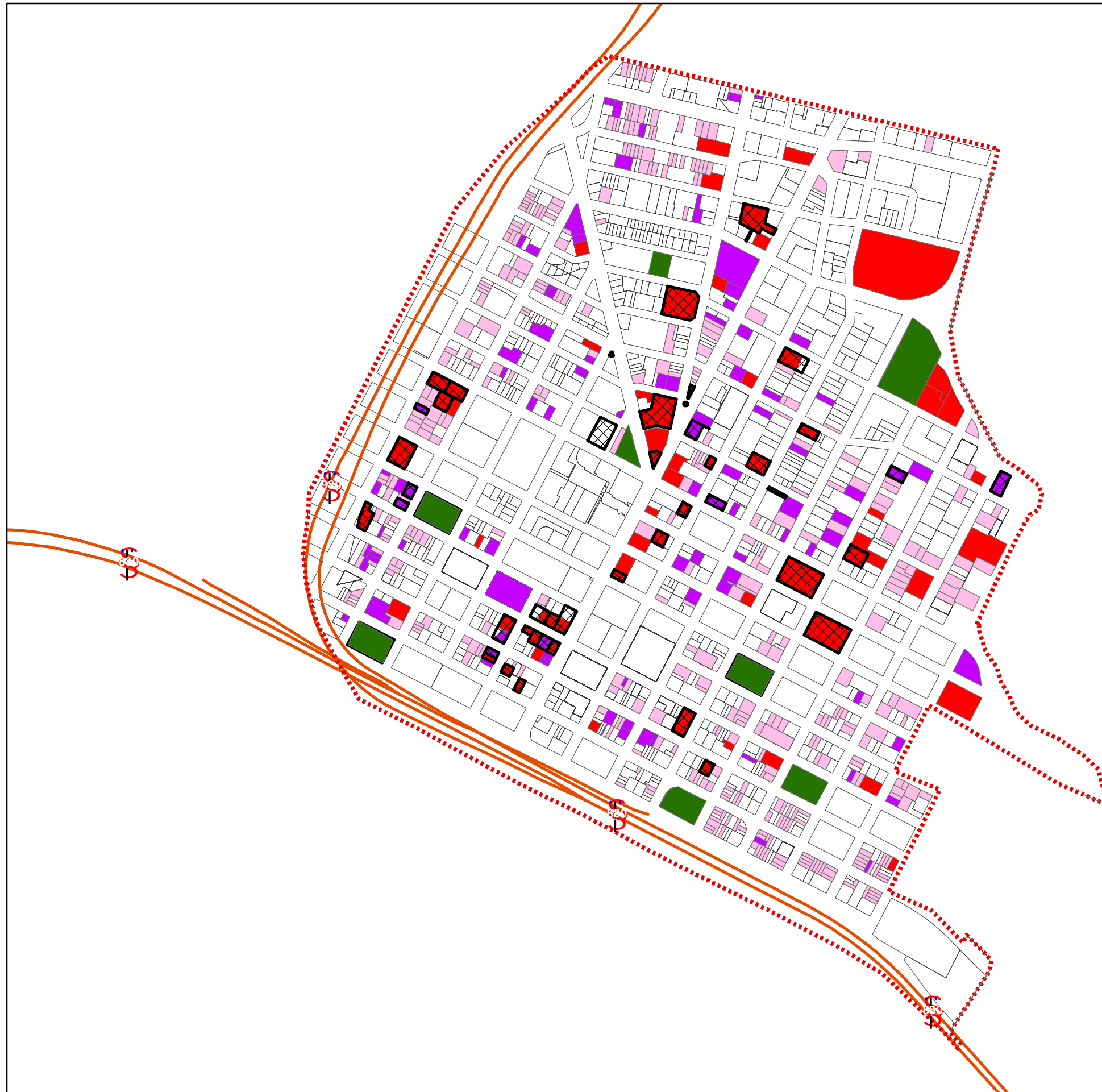
Historic Rating

-  A - Highest Importance
-  B - Major Importance
-  C - Secondary Importance

City Landmarks

-  City Designated Landmarks
-  Open Space
-  Central Business District (CBD)

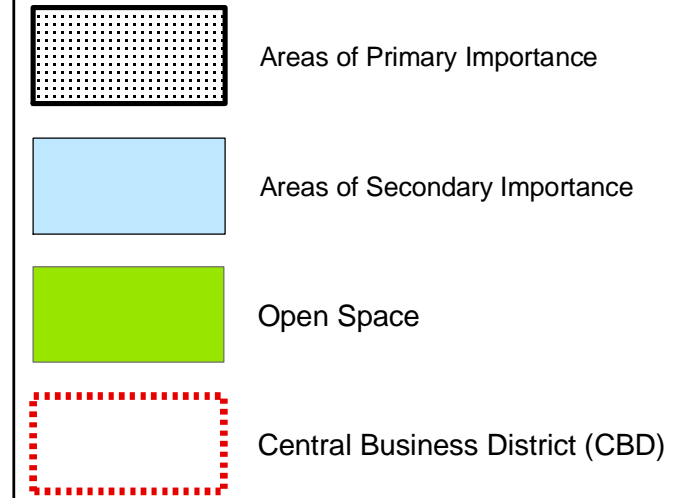
Note: A and B: Potentially eligible for landmark designation.
C: Potentially eligible for heritage property designation.



CENTRAL BUSINESS DISTRICT

Historic Resources

Historic Districts



Note: Areas of Primary Importance (API):
Historically cohesive areas that contain a high proportion of individual properties with a "C" rating or higher and appear eligible for the National Register of Historic Places as a district.

Areas of Secondary Importance (ASI):
Similar to APIs except that ASIs do not appear eligible for the National Register of Historic Places.

